

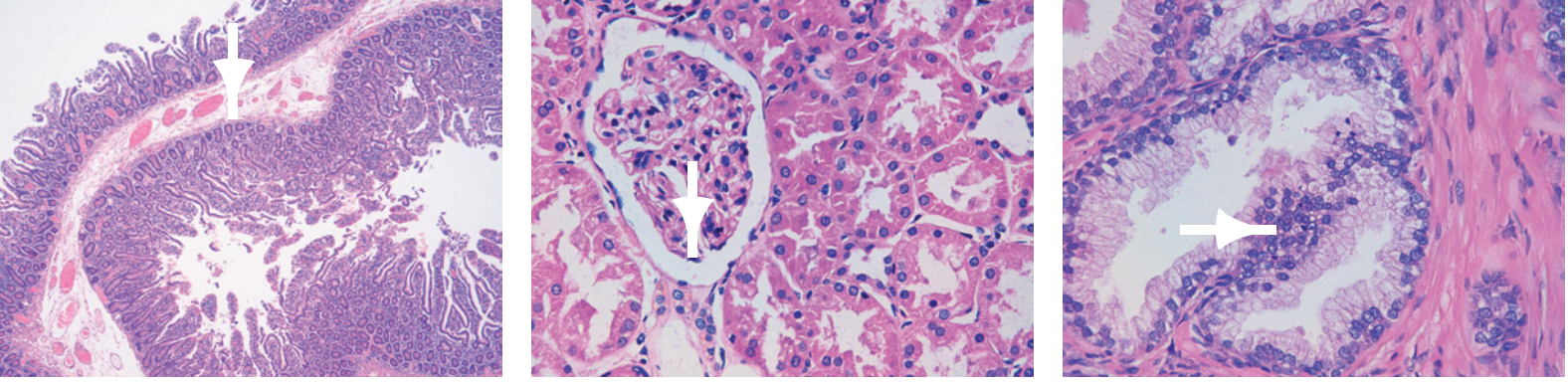
From Eye to Insight



LEICA DM MULTIPLE VIEWING SYSTEMS

Great Discoveries Begin with Vision





LEICA MICROSYSTEMS' DM MULTIPLE VIEWING



The Leica DM1000 shown with a two station system

All together now

Leica's multiple viewing systems are specially designed, flexible and highly modular. They attach to a single microscope and allow users to simultaneously view high resolution images of the same specimen live.

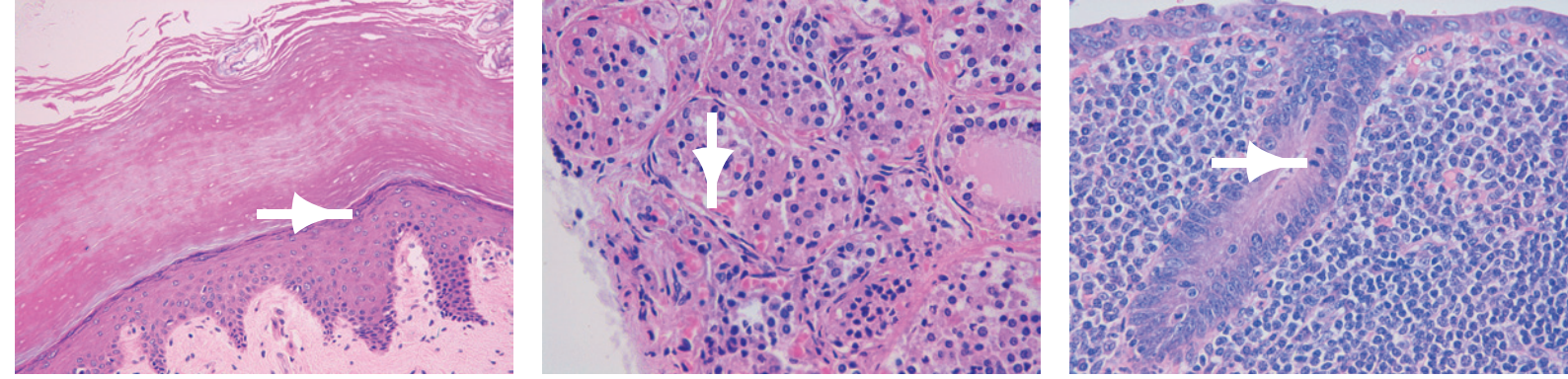
The eyes have it

Each user receives first-hand experience in the analysis of samples, while achieving a real sense of working with a microscope – including the advantage of unmatched image quality, that only the true microscope image offers. The multiple viewing systems deliver outstanding color and intensity balance from station to station. Infinity corrected, high quality, all glass optics with precision coatings produce a crisp, clear image for every viewer.

Built to last

Designed for durability, the external viewing tubes feature all-metal construction for both the housings and pillars, making the systems exceptionally stable for many years of usage.





SYSTEMS

Tailor made

Add as many viewing stations as you need, from 2 to 20 modular systems can be used with a single microscope. No matter the size or shape of the room, ergonomic solutions can be tailored to nearly any laboratory space and application.

Get exceptionally crisp imagery with the 360-degree rotatable eyepieces. And with 22 mm field of view, see more information with every image.

Light the way

A bright white LED illuminated arrow can be positioned to point out areas of interest anywhere in the field of view, clearly visible to all viewers at each station.

Room to work

Accommodate the varied needs of your users with a full range of ergonomic tubes, allowing comfortable viewing and ample elbow room for all types of viewers.

Change it up

As your needs change, add more stations at any time. The modular viewers are upgradable on-site, so you can minimize downtime while maximizing your system.

Answers in focus

Since all viewers see the same superb image, Leica DM Multiple Viewing Systems are a perfect solution for obtaining a second opinion, consultation or training.

When every second counts, doctors use Leica multiple viewing systems during surgery to obtain a consultative analysis and opinion from colleagues. For pathologists and their staff, multiple viewing systems are an invaluable resource for conferences. Residents use the systems during their training to analyze the features of cell structures and to learn how to make diagnoses. In a classroom setting the systems are ideal for hands on instructions.

Easy to assemble and adjust, multiple viewing systems are compatible with all the current Leica DM microscope series for clinical, research, and educational applications.

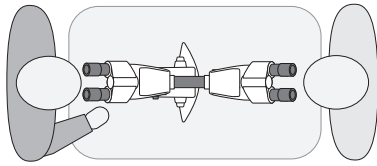
Whenever unmatched optical quality for multiple viewers is crucial, multiple viewing systems from Leica will exceed your expectations – from 2 to 20 stations, we'll keep you focused.



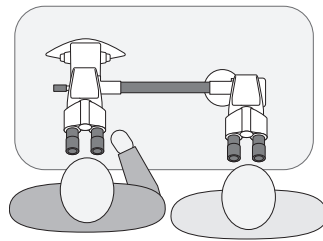
MULTIPLE VIEWING SYSTEMS CONFIGURATIONS

The full range of configurations can be easily designed to accommodate your unique requirements, from different numbers of stations to the size and shape of the room.

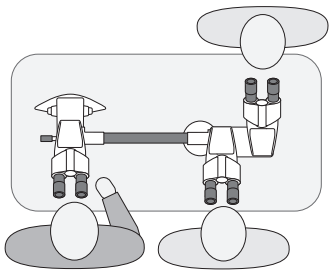
2 Stations, Face to Face



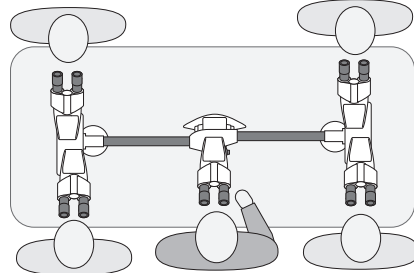
2 Stations, Side by Side



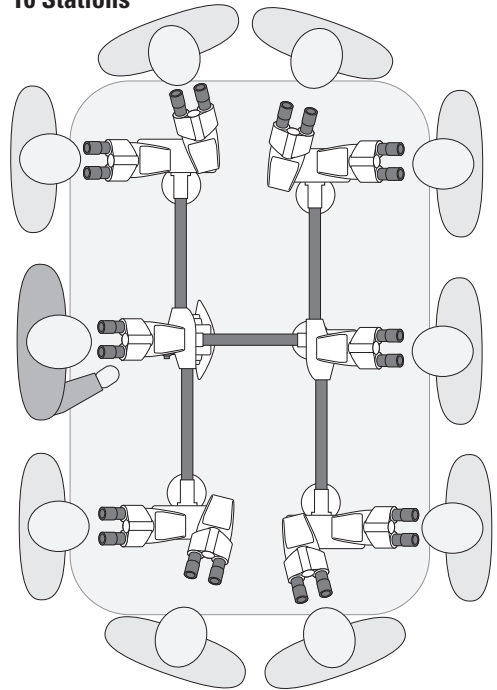
3 Stations



5 Stations



10 Stations



20 Stations

